

UNIVERSITY OF WAIKATO

**Hamilton
New Zealand**

Is the Democratisation Process Responsive to Remittance Flows?

Evidence from Bangladesh

Gazi M. Hassan and Shafiqur Rahman

Department of Economics

Working Paper in Economics 06/15

September 2015

Corresponding Author

Gazi M. Hassan

Economics Department
University of Waikato
Private Bag 3105
Hamilton, 3240
NEW ZEALAND

Email: gmhassan@waikato.ac.nz

Shafiqur Rahman

Lundquist College of Business
University of Oregon
302 Peterson Hall
Eugene, Oregon, 97403-1208
UNITED STATES OF AMERICA

Email: mrahman@oregon.edu

Abstract

This paper examines how remittances relate to democratisation process in Bangladesh. Using Structural VAR (SVAR) methods, we are able to compensate for the endogeneity issue. While remittances respond to innovations in the macro-political variables, remittances also have important impact on these variables. Our results build a synergy between two opposing findings in the political science literature which find on one hand that remittances stabilise autocracies and also, on the other hand that it fosters the prospect of democratisation. We show that a shock in remittances will have a negative but transitory effect on democracy. Initially there will be a bout of autocratic episodes which will be eventually eliminated and democracy restored to its original level in three to five years. Using an alternative measure of democracy we also show that for a shock in remittances, a small permanent positive effect on democracy is observed after the fifth year which does not revert to zero at end of the ten period horizon.

Keywords

remittances
democratisation
structural VAR (SVAR)

JEL Classification

O10, O15, F22

1. Introduction

Remittances sent by migrant workers to their families have become important sources of funds for many developing countries. The growth rate of remittances worldwide has been quite remarkable in the last two decades. Analyses of World Bank data show that during 2007 and 2008, the growth rate in remittances was 15 percent¹.

Studies devoted to economic consequences of remittances find a number of benefits to its recipients. For example, remittances are credited with the reduction of poverty, alleviation of credit constraint, and improvements in the educational and health outcomes of the recipient households (see Adams and Page 2005, Cox-Edwards and Ureta 2003, Frank and Hummer 2002, Gupta et al. 2009, Hanson and Woodruff 2003, Hildebrant and Mckenzie 2005, Page and Plaza 2006, Quartey and Blankson 2004). Remittances are instrumental in generating savings and accumulation of productive assets by removing investment constraints (see Arun and Ulku 2011, Chiodi et al. 2012). Remittances are compensatory flows generating countercyclical behaviour that enables transfer recipients to smooth their consumption and minimise its volatility (see Chami et al. 2008, Chami et al. 2005, Combes and Ebeke 2011, Kurosaki 2006, Mishra 2005, Sayan 2006). Countercyclical remittances can work as automatic output stabilisers and reduce income volatility (see Chami et al. 2008, 2009, Yang and Choi 2007). The inflow of remittances does, however, pose several development challenges, specifically in terms of controversial effects on economic growth (see Chami et al. 2003, World Bank 2006) and their capacity to appreciate the real exchange rate causing a Dutch disease effect (see Amuedo-Dorantes and Pozo 2004, Acosta et al. 2007, Chami et al. 2008, Hassan and Holmes 2013, Montiel 1999).

The political consequences of remittances in the recipient countries is relatively understudied (Meseguer and Burgess 2014). The increase in worldwide emigration due to the advent of globalisation may cause changes to the dynamics of the political scenario in the out-migration countries for variety of reasons, one of which could be remittance receipts. Only recently in the political science literature has the question of how out-migration influences political change, and in particular democratisation gained some momentum (Kapur 2010, Moses 2011, Pfutze 2012).

Is the impact of receiving remittances on political behaviour significant in recipient countries? There are several scholarly work which show that emigrants although geographically separated from their home country, engage in its politics (Levitt 1998, Kapur 2010) and they do so exerting the so called 'voice' after 'exit' (Careja and Emmenegger 2012,

¹ Ratha et al. (2009). Barajas et al. (2009) and Chami et al. (2008) have reported that during 2007, remittances through official channels were \$300 billion in addition to unknown transfers through unofficial channels, which are estimated to be about 40 percent of flows through the official channels.

Meseguer and Burgess 2014). These studies usually analyse the impact of receiving remittances on political behaviour of the migrant household or the consequences of remittances on electoral outcomes. In a recent study it is found that remittances can advance democratisation by undermining the capacity of autocratic regimes to mobilise electoral support through the delivery of goods and services (Escriba-Folch et al. 2015). Similarly, the non-taxability of remittances income can also foster a more competitive elections by making it hard for an incumbent government's ability to maintain political patronage systems (Pfütze 2012).

One may also get the impression that remittances flows being an international transfer analogous to foreign aid or non-tax revenue can on the other hand sustain authoritarian regimes that reduce the need for taxation and enhance the capacity of current regimes to purchase political support or quell dissents (Morrison 2009). Likewise, Ahmed (2012) demonstrates that foreign aid and remittance inflows in conjunction can sustain autocracies by empowering government to survive longer. The effect of the combination of foreign aid and remittances on the government survival depends on the fact that these inflows of money are unearned foreign income that can be exploited to attain perverse objectives of a government. Although the nature of remittances flow is different to that of foreign aid or oil rents because remittances are small household-to-household private income transfers, emigration can still alter political behaviour of the migrant family in such a way that those who receive remittances are less likely to depend on the state and more on the family to satisfy their needs (Hiskey 2008, p.170). In addition, because remittances are countercyclical flows they can insulate recipient households from domestic economic shocks which might lower dissatisfaction with the incumbent regime (Regan and Frank 2014, pp.5-8).

It was noted recently by Abdih et al. (2012) that remittances can affect the quality of governance. The authors showed that remittances can lower civic engagement by playing a buffer role between government and citizens, and deteriorate the quality of institutions and governance in receiving countries by reducing the incentives for citizens to monitor and hold their government accountable. Families receiving remittances may be oblivious to the quality of governance because they are better insulated, as a result of income received from overseas, from the bad decisions made by their governments.

This paper explores remittance receiving patterns in Bangladesh and their impacts on relevant macro-political variables. In particular, we trace how workers' remittances are linked to home country's GDP and democratisation process. The focus on Bangladesh is well justified because it receives one of the highest volumes of yearly remittances in the world and given its long history of emigration and the curious developmental problems and prospects, we believe that Bangladesh, is an ideal laboratory to investigate whether the democratisation process responds to the flow of foreign income transfers in a dynamic context. In departure from previous literature, we specifically model and analyse the time series behaviour of democracy and remittances to measure how the former responds to a shock in the latter.

While one can easily argue that inward remittances flows may affect the level of GDP through alleviating liquidity constraints on investment and the level democratisation by altering electoral process, causality may also run in other direction. Aggregate remittances inflow may be influenced by macroeconomic and political conditions. For example, a negative shock in home country's GDP may attract more remittances because migrants' utility is increasing in their own consumption as well as in their families' consumptions. Likewise, a steady and functioning democracy in the home country may signal that migrants view the political and economic environment favourable where they can trust to send their money.

In sum, while macroeconomic and political conditions are likely to impact the level of remittances flowing to Bangladesh, remittances may also affect the level of GDP or the process of democratisation. To get a broader and more complete understanding of remittances and the macro-political economy, we use a structural time series methodology that accounts for the endogeneity resulting from this reverse causality. In this way, we can explore how the macro-political variables affects remittances and how remittances, in turn, affect the macro-political economy. To our knowledge, this is the first such exercise measuring the impact of remittance on democratisation in Bangladesh adopting a structural time series approach to analyse the macro-political impact of remittances.

The rest of the paper is as follows: Section 2 discusses the dynamics of political process at the state level in Bangladesh since independence and section 3 provides a description of remittances received and its growth in Bangladesh. Section 4 discusses the data and the methodology adopted in this paper. Section 5 discusses the results and concludes.

2. Political Dynamics in Bangladesh

The cultural and political history of Bangladesh is unique: with its Muslim majority population, it once was a part of the undivided Indian sub-continent, located in the greater area of Bengal. This region was later divided into the eastern wing of Pakistan after the 1947 partition, but eventually became an independent nation in 1971 after a bloody separatist war with Pakistan in 1971. After independence Bangladesh drafted a progressive constitution in 1972 institutionalising parliamentary democracy as the form of government and enshrining secularism as a guiding principle. Awami League under the leadership of Sheikh Mujibur Rahman, the undisputed leader of the independence movement, won an overwhelming victory in the first national parliamentary election held in March 1973, winning 291 out of 300 seats with 73 percent of votes although the ruling party had received accusation of using strong-arm tactics to ensure lopsided victory (see Weiss 2014).

The first elected government of Bangladesh struggled to reconstruct the economy and society after the war and turned increasingly politically authoritarian and economically nationalistic (see Lewis 2011). The process culminated in passing a amendment of

constitution with brute majority in January 1975 that established a one-party rule, changed form of government from parliamentary to presidential, severely curtailed press and political freedom and avowed launching of a socialist economy (see Lewis 2014, Weiss 2014). Sheikh Mujibur Rahman was assassinated in August, 1975 and after a brief period of interregnum Bangladesh experienced nearly 15 years of intermittent military rule and presidential government under two army generals, first Ziaur Rahman (1976-1981) and then Hussain Muhammad Ershad (1982-1990).

During this 15-year period, some political rights and press freedom were restored but they remained significantly restricted. Several national and local elections took place but their fairness and democratic credibility are questioned by political experts. Although secularism as a principle of the constitution was gradually undermined, the two regimes also set Bangladesh on path to economic and trade liberalisation. Also it is during this period that the foundation of the two pillars of the rapid growth in foreign exchange earnings of Bangladesh, remittance income from workers emigration and export of garments and apparels, were laid.

Bangladesh made a huge leap in democracy and political freedom in the early 90's when the unelected and unpopular president H.M Ershad gave up power and the first free, fair and competitive national election was held in 1991. Parliamentary democracy was restored along with more political and press freedom (see Lewis 2011). In the 1991 election, Bangladesh Nationalist Party (BNP), the party established by Ziaur Rahman, won largest number of seats and formed government. Since then three more elections, widely deemed to be fair, have taken place in 1996, 2001 and in 2008. In all these elections the immediate incumbent party lost power and the main opposition party won, forming new government. But beyond this turnover of power, democracy in Bangladesh made little progress. During the last two decades Bangladesh politics was plagued with widespread corruption, unrest and violence while patron-client relationship has become ubiquitous. The democratic recidivism reached a nadir in 2013 when hundreds of lives were lost in violence and the January, 2014 election returned incumbents to power without significant political and voter participation².

3. Remittances in Bangladesh

In 1976 the Bangladesh government with the aid of active Middle East policy began exporting cheap and abundant Bangladeshi labour migrants to Middle Eastern countries to fuel their demand for construction workers. This trend later continued to other parts in East and Southeast Asia. Bangladesh is now among the top ten remittance-receiving (measured in terms of current US dollars) and manpower-exporting countries in the world (World Bank, 2011).

² <http://www.hrw.org/news/2014/04/29/bangladesh-elections-scarred-violence>

Remittances constitute the most important external financial flow in the Bangladesh economy compared to foreign aid and foreign direct investments (FDI). Figure 1 plots the external flow of personal remittances receipts during the period 1976–2012. Beginning with a modest amount of US\$49 million in 1976, remittance flows reached US\$10.8 billion in 2010, an approximately two hundred-fold increase during this period. Figure 2 presents the growth in remittances from 1976–2012. The red curve shows the moving average of remittances growth and looking at which it can be seen that growth in remittances stabilised during the 1990s with marginal increase over time till 2010 after which a falling trend can be observed.

Figure 1. Remittances in Bangladesh 1976-2012
Personal Remittances Received in USD

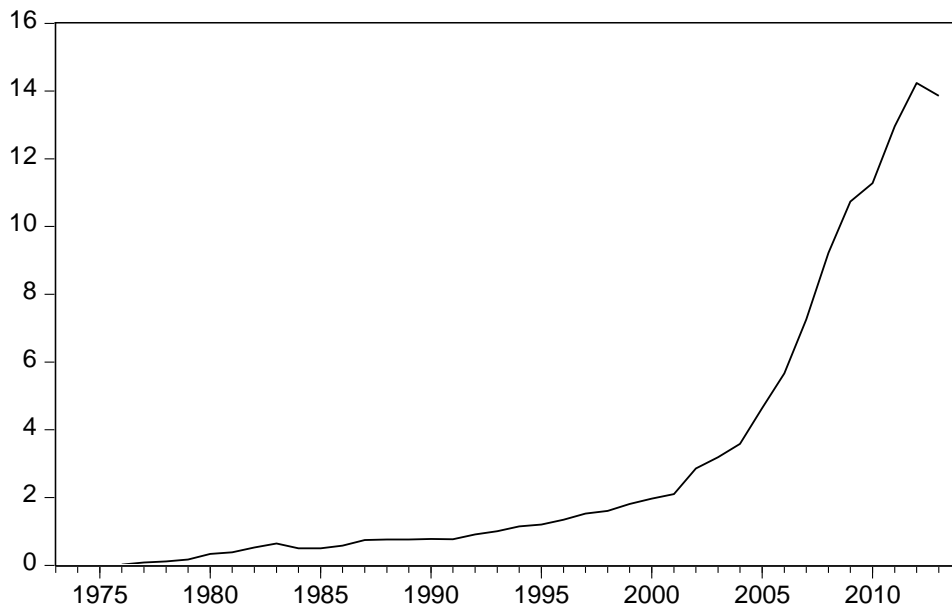
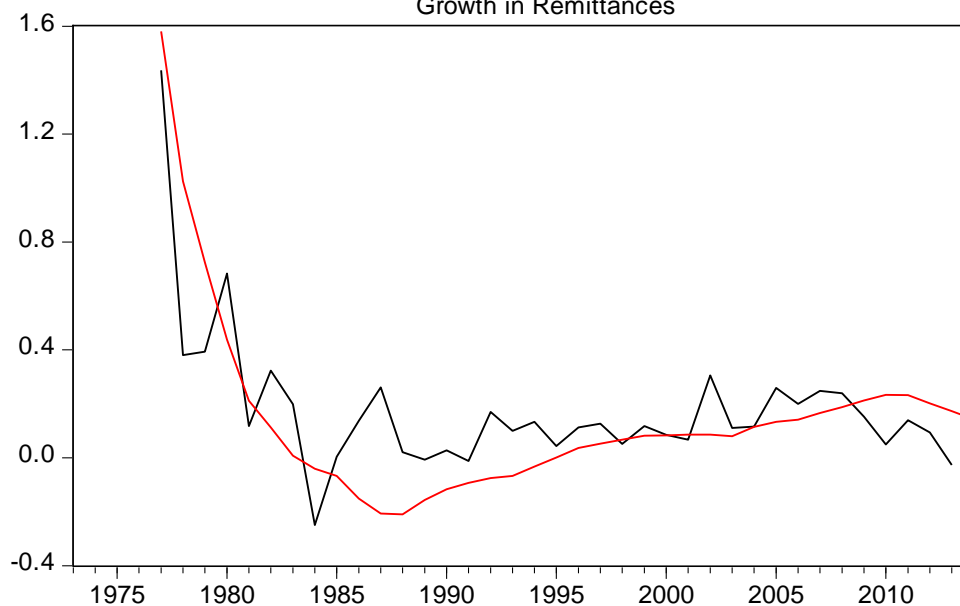


Figure 2. Remittances Growth in Bangladesh 1976-2012
Growth in Remittances

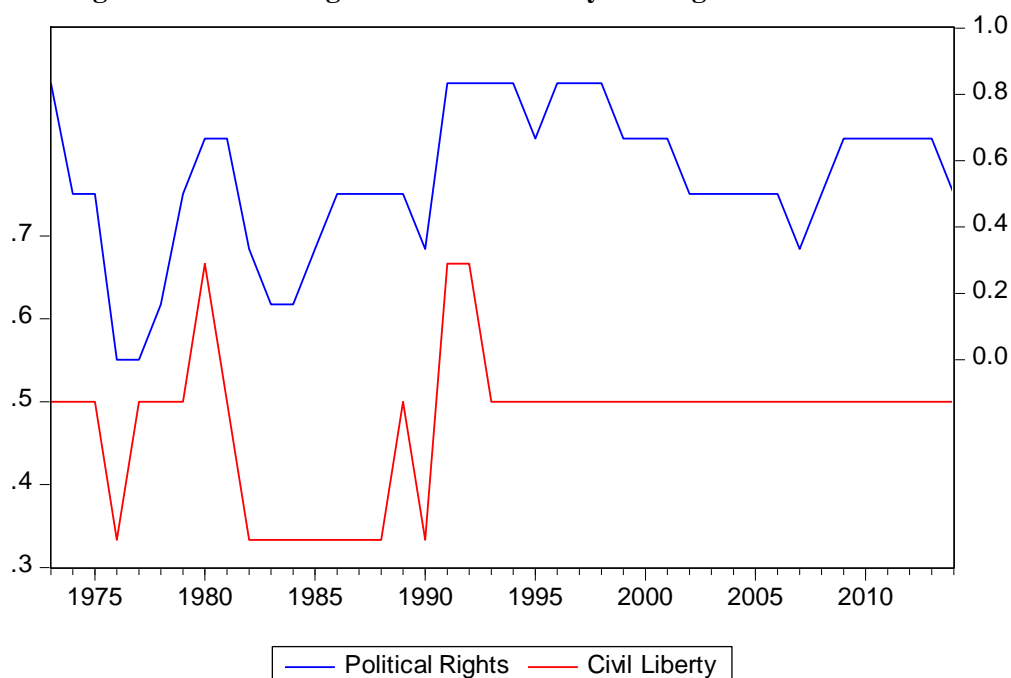


Data

To answer our research question, our empirical method integrates GDP, democracy and remittances in a system framework. While the measurement of GDP and remittances are relatively less debatable, as a measure of democracy the indicator of electoral rights, we use the Freedom House index, also known as Gastil index (see Gastil 1982-83 and subsequent issues). The Freedom House concept of electoral rights uses the following basic definition: 'Political rights are rights to participate meaningfully in the political process. In a democracy this means the right of all adults to vote and compete for public office, and for elected representatives to have a decisive vote on public policies' (Gastil 1986-87, p.7). Freedom House applied the concept of electoral rights on a subjective basis to classify countries annually into seven categories based on two indicators—political rights and civil liberty³ that are measured on a one-to-seven scale, with one representing the highest degree of freedom and seven the lowest.

The combined average of countries ratings for political rights and for civil determines the level of freedom, aka, democracy with a score one representing the highest level and a score seven the lowest. The original ranking from one to seven was converted here to a scale from zero to one, where zero corresponds to the fewest rights (Freedom House's rank seven) and one to the most rights (Freedom Houses's rank one). See Figure 3 for the evolution of political rights and civil liberties in Bangladesh from 1973 to 2012.

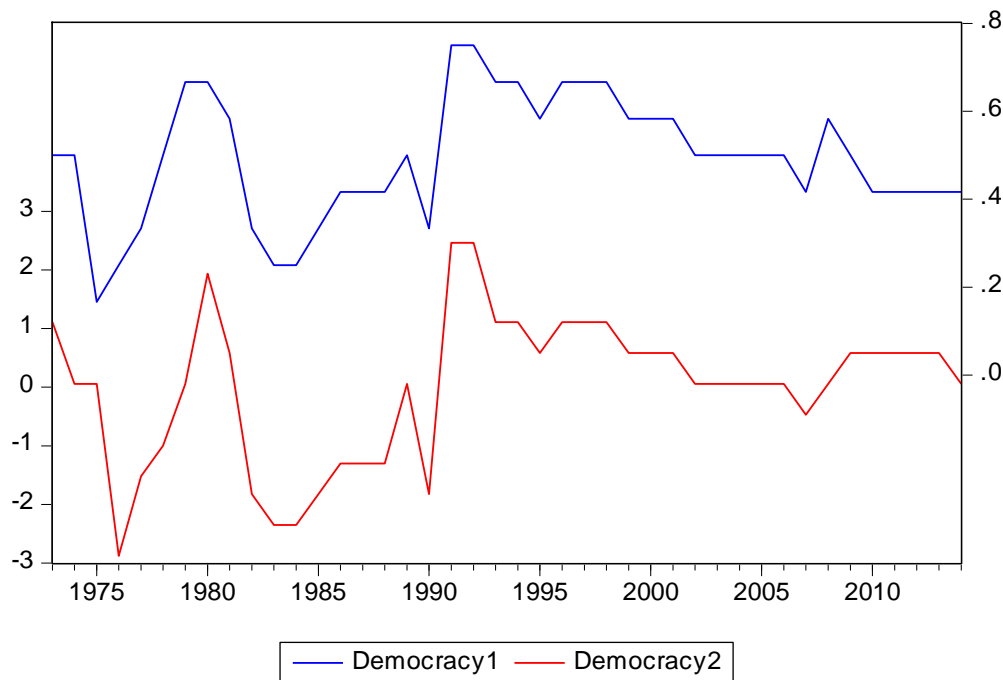
Figure 3. Political Rights and Civil Liberty in Bangladesh: 1973 – 2012



³ 'Civil liberties are rights to free expression, to organize or demonstrate, as well as rights to a degree of autonomy such as is provided by freedom of religion, education, travel, and other personal rights' (Gastil 1986-87, p.7).

We use two measures of democracies in this paper. The first approach which is the combined averages for political rights and civil liberties, is taken from Freedom House’s *Freedom in the World 1972-2014*. In the second approach we use the principal component analysis between political rights and civil liberties and obtain the highest principal component as an alternative measure of democracy. These two indices are termed as democracy1 and democracy2 respectively, and grouped together in Figure 4. Having two measures of democracy allow us to check for the robustness of our empirical model. The remaining data used in the paper – remittances in current USD and real GDP – is obtained from World Development Indicators of the World Bank.

Figure 4. Democratisation Process in Bangladesh: 1973 – 2012



Methodology

A major challenge common to most macro-political studies revolves around the observation that macroeconomic time series are endogenous. We have noted this in Section 1, where we posited, for example, that remittances may affect democratisation process by lowering the level of civic engagement and dependency on the state for its recipients or by diminishing state's capacity to buy electoral support. Yet, democracy may, in turn, also influence how much is remitted by individual migrants because stable democratic conditions may signal that migrants view the political-economic environment favourable and, as such, determine aggregate remittance inflows. To account for these endogenities, our empirical methodology is based on Structural Vector Autoregression (SVAR) approach. Although vector autoregression (VAR) model was originally developed to study monetary policy transmission mechanism in the economy, the SVAR model which is based on VAR is a useful methodology to examine structural shocks in multivariate time series models which can also be employed to study the macro-political time series data (Brandt and Freeman 2009).

The SVAR approach therefore is a useful tool to examine structural shocks to Bangladesh's real GDP, democracy index and remittances flow over the period 1973 – 2012. The usefulness of the SVAR approach is that it addresses the endogeneity problem because this methodology treats all variables in the structural model as endogenous. In other words, this approach takes into account that GDP, democracy and remittances can influence each other in the system. A crucial issue in the estimation of structural model is the identification of the empirical model, but SVAR models take another approach to achieve identification by focusing on the role of shocks for the dynamics of the model by using economic theory in analysing simultaneous interaction of variables (see Aslanidi 2007).

The SVAR methodology is specified in the following primitive form is as follows:

$$AZ_t = \alpha + \sum_{i=1}^P B_i Z_{t-i} + u_t \quad (1)$$

where Z_t is a $(n \times 1)$ vector of stationary endogenous variables, A and B_i are $(n \times n)$ matrices of structural parameters and u_t is a $(n \times 1)$ vector of structural innovation which is orthogonal.

The reduced form SVAR of Eq. (1) can be written as:

$$Z_t = A^{-1}\alpha + \sum_{i=1}^P A^{-1}B_i Z_{t-i} + A^{-1}u_t \quad (2)$$

which is equivalently written as:

$$Z_t = \Phi + \sum_{i=1}^P \Theta_i Z_{t-i} + \varepsilon_t \quad (2')$$

The solution to the SVAR system is given by the following equation (see Gianni and Giannini 1997):

$$Au_t = B\varepsilon_t \quad (3)$$

The SVAR system in Eq. (3) relates the u_t and the underlying innovations or shocks ε_t . The A matrix relates to the covariance matrix of contemporaneous relations in endogenous variables, and the B matrix relates the SVAR to residuals of structural innovations. These relations are contemporaneous restrictions on the structural parameters of A and B matrices. The identifying restrictions of the A covariance matrix can be recursive or non-recursive. We use non-recursive identifying restrictions which are discussed later.

Our analysis is based on impulse-response functions (IRFs) of the SVAR estimations. The IRFs describes the reaction of one variable in the system to the innovations in another variable in the system, while holding all other shocks at zero. That is, IRFs provide information on the direction of the response as in whether the variable in question increases or decreases in response to a shock to another variable in the system. It is unlikely that the

actual variance-covariance matrix of errors will be diagonal. Hence, to isolate shocks to one of the VAR errors, the methodology requires that identification is obtained by structural factorisation, i.e., imposing zero restrictions on the A covariance matrix with the main diagonal normalised to 1s. This non-recursive procedure allows to add any theoretically based restrictions on the covariance matrix A as long as SVAR is identified. The general rule is to have $k(k+1)/2$ restrictions for k endogenous variables.

In order to investigate the interactions between GDP, democracy and remittances in Bangladesh we estimate two separate models in a system of stationary variables, as follows:

Model 1

$$Z_t = (GDP_t, DEM1_t, REM_t)$$

where GDP is the Gross Domestic Product in constant 2005 US dollar, $DEM1$ is the democracy index on the converted 0 to 1 scale based on combined average of political rights and civil liberty data (stationary version of democracy1 in Figure 2) and REM is standardised personal remittances received in current US.

In order to test the robustness of the Model 1, we incorporate an alternative measure of democracy and estimate the following model:

Model 2

$$Z_t = (GDP_t, DEM2_t, REM_t)$$

In Model 2, GDP and REM are same as previously. $DEM2$ is the measure of democracy index we constructed based on the principal component analysis of the political rights and civil liberty data converted to 0 to 1 scale (same as the measure democracy2 in Figure 2).

4. Estimation and Results

At first we check for unit roots for GDP , $DEM1$, $DEM2$ and REM . It is found that GDP is $I(2)$, $DEM1$ and REM are $I(1)$ and $DEM2$ is $I(0)$. These variables are then transformed in its stationary form and put into the VAR model. We select the lag length of the VAR using the information criteria and most suggested a VAR(1) model, and given that we have yearly data this is also what was expected. Having estimated the VAR(1) model, to isolate shocks to one of the VAR errors, the identification is obtained by structural factorisation, i.e., imposing restrictions on the A covariance matrix which in this paper is set as follows⁴:

$$\begin{bmatrix} 1 & a_{12} & 0 \\ 0 & 1 & 0 \\ a_{31} & 0 & 1 \end{bmatrix} \begin{bmatrix} u_t^{GDP} \\ u_t^{DEM1} \\ u_t^{REM} \end{bmatrix} = \begin{bmatrix} b_{11} & 0 & 0 \\ 0 & b_{22} & 0 \\ 0 & 0 & b_{33} \end{bmatrix} \begin{bmatrix} \varepsilon_t^{GDP} \\ \varepsilon_t^{DEM1} \\ \varepsilon_t^{REM} \end{bmatrix}$$

⁴ Same identification strategy used for both models.

The non-zero coefficients a_{12} and a_{31} indicate the presence of contemporaneous reduced form shocks. The reason for imposing such restrictions is that it is not unreasonable to expect that democracy can affect GDP contemporaneously (see Acemoglu et al. 2014, Papaioannou and Siourounis 2008) and that being compensatory transfers, remittances can respond to GDP of the home country in the same year (see Chami et al. 2008 and 2005, Combes and Ebeke 2011).

$u_t^{GDP}, u_t^{DEM1}, u_t^{REM}$ correspond to the reduced form equation residuals as unexpected movements from the variables $GDP_t, DEM1_t, REM_t$ and $\varepsilon_t^{GDP}, \varepsilon_t^{DEM1}, \varepsilon_t^{REM}$ are the corresponding structural form of shocks⁵.

Our VAR(1) model requires $2k^2 - k(k+1)/2$ restrictions for matrix A and B to be just identified. We have an over-identified system with two structural restrictions imposed. In SVAR models, a shock in the system corresponds to a positive one standard deviation innovation. Figures 5 and 6 show upper and lower bands of impulse response function (IRF) corresponding to a ∓ 2 standard error band over 10 years.

The short-run IRFs of the SVAR model is presented in Figure 5. The results in Figure 5 show that in case of a one-time shock of a positive one standard deviation innovation in GDP , the effect on GDP will not revert to zero even after ten periods (years), while it seems the same effect will have a transitory positive effect on democracy ($DEM1$). The response of remittances to the shock in GDP is not permanent, but it takes about ten periods for remittances to revert back to its original level. In case of a one-time shock of a positive one standard deviation innovation in $DEM1$, there is a marginal non-permanent effect on GDP which return to zero within five years, while the response of democracy to its own shock quickly approaches zero in less than three periods. Remittances seem almost unresponsive to any shocks to democracy. Finally, we can see that for a one-time shock of a positive one standard deviation innovation in REM , the effect on GDP returns to zero after around ten periods as it does for remittances itself. The interesting result relates to how $DEM1$ responds to a shock in REM .

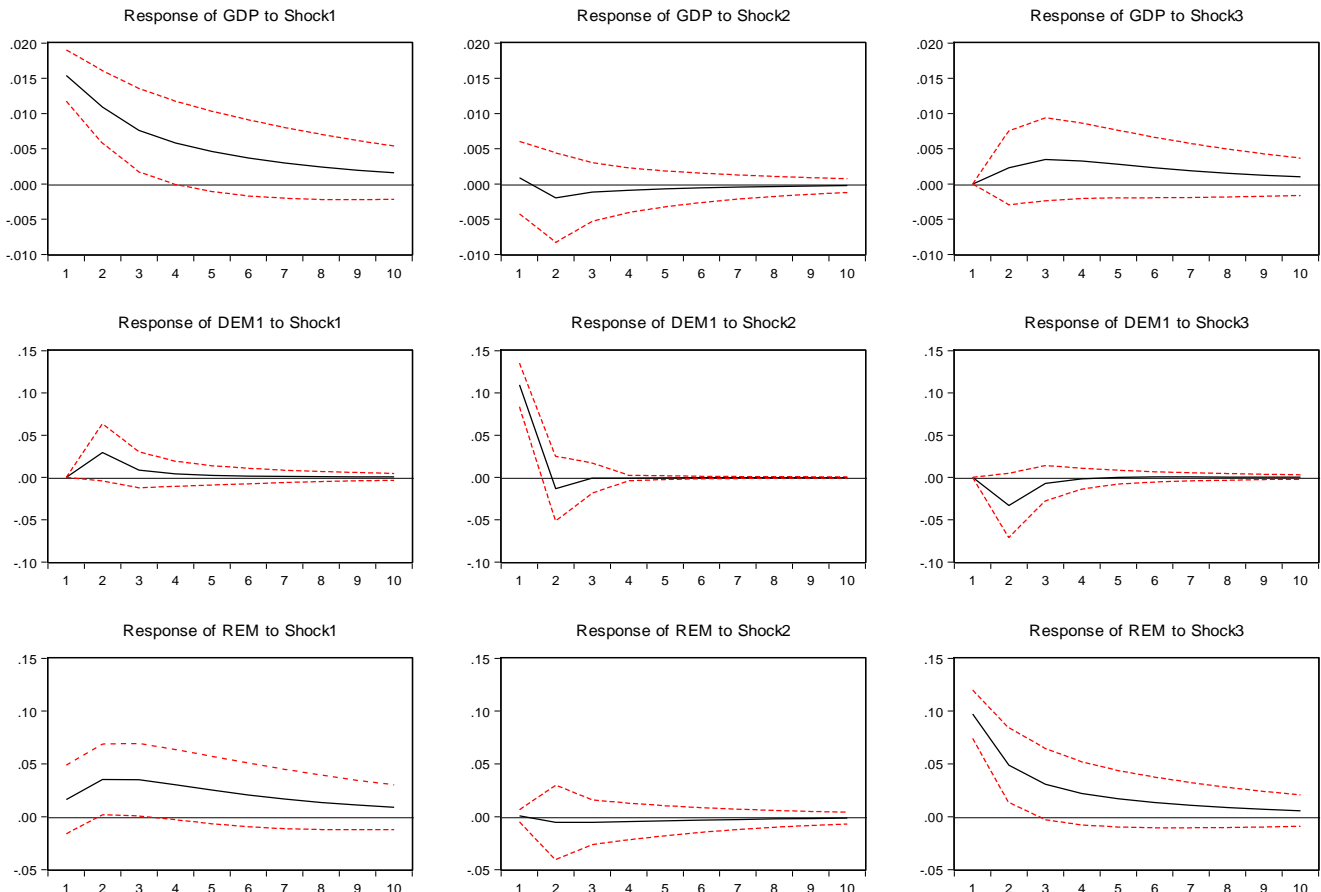
Our results show that a shock in remittances will have a negative but transitory effect on democracy. Specifically, a shock in remittances flows will lead the measure of democracy to fall at first and then rise. In all, for $DEM1$ to revert to zero, it will take around four years. This may be explained as follows. An initial one-time shock to remittances will lead to consumption and investment shocks to the recipient households during the initial periods causing the migrant family to become less dependent on the state and further lowering their dissatisfaction with the current regime, enabling the ruling party to become relatively undemocratic. However, the effect of the initial shocks will tend to die down in successive

⁵ In the impulse response functions (IRF) these shocks are labelled Shock1, Shock2 and Shock3, respectively.

periods, and current consumption and investment will tend to depend more on domestic economy and state patronage which will enhance the civic engagement of the migrant family members to hold the current government accountable and thereby enhancing the quality of democratic institutions. The one-time shock in remittances therefore will have negative transitory effect.

Figure 5. Impulse Response Functions from Model 1

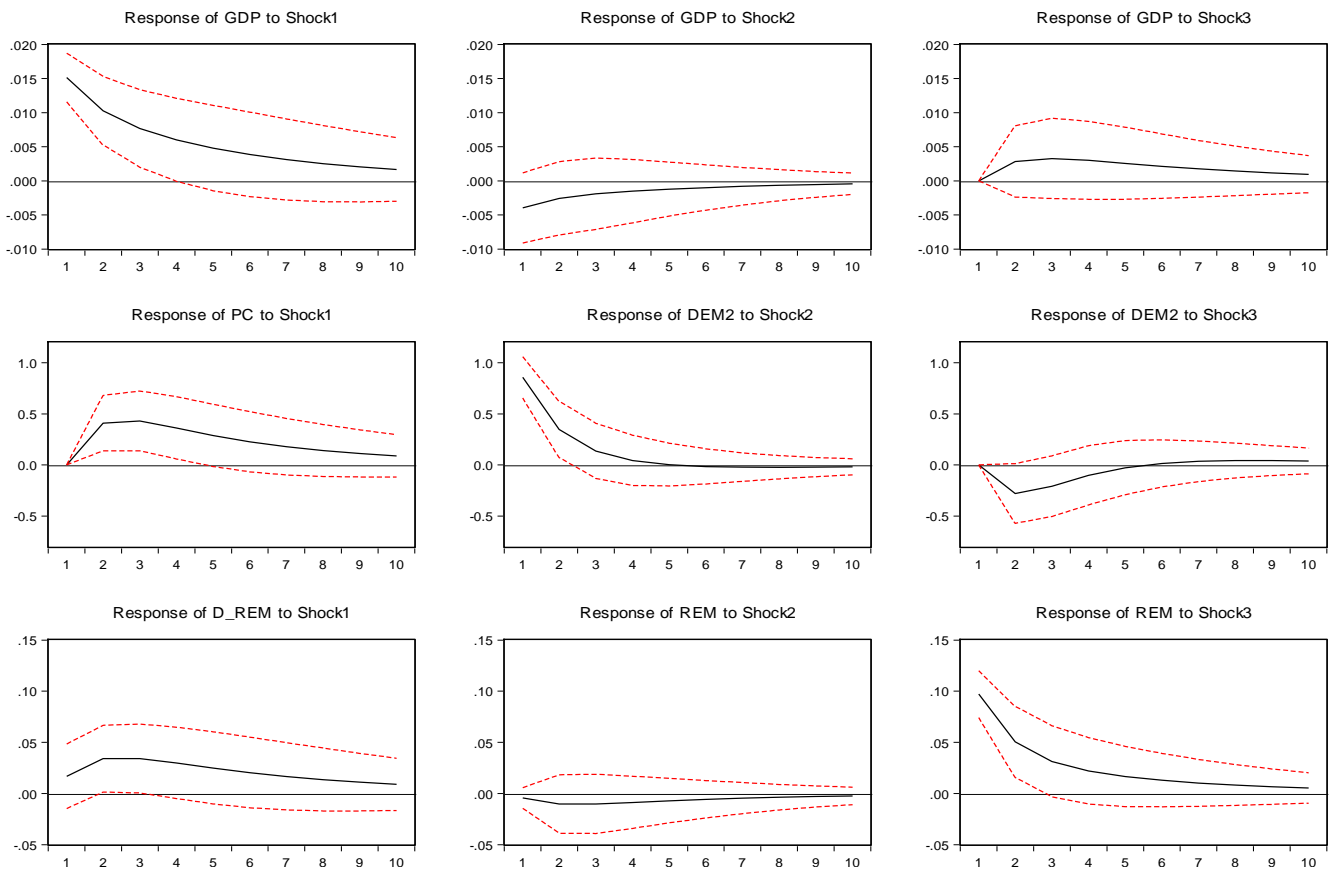
MODEL1: Response to Structural One S.D. Innovations ± 2 S.E.



In Figure 6, we present the short-run IRFs of our model2 which includes the same variable but an alternative measure of democracy (*DEM2*). The results are qualitatively similar to those in Figure 4 except for the response of democracy to shock in remittances. Our main concern is the response of *DEM2* to a one-time shock of a positive one standard deviation innovation in *REM*. Like before, our results show that a shock in remittances will have a negative but transitory effect on democracy with an exception. The difference here is that after *DEM2* revert to zero in five years, there will be a small positive permanent effect which does not return to zero in the ten year horizon. That is the initial negative transitory effect on democracy, will be followed by very small permanent positive effect.

Figure 6. Impulse Response Functions from Model 2

MODEL2: Response to Structural One S.D. Innovations ± 2 S.E.



5. Conclusions

This paper adds to the expanding literature on the consequences of remittances on domestic economy and politics. The evidence in paper show that while the macro-political variables in our model help explain remittances inflow, there is an even bigger role for the converse; shocks to remittances generate sizable responses from macroeconomic and political variables. While the previous studies on this topic have examined the causal relationship between remittances and democratisation, we estimate, in departure from the literature, a SVAR model to observe the responsiveness of democracy to shocks in remittances to control for the reverse causality in these two variables by treating both as endogenous.

Our results build a synergy between two opposing findings in the political science literature which suggest on one hand that remittances stabilise autocracies (Ahmed 2012) and on the other hand that it fosters the prospect of democratisation (Escriba-Folch et al. 2015). Our data show that in the case for Bangladesh a shock in remittances will have a negative but transitory effect on democracy. That is, initially there will be a bout of autocratic episodes which will be eventually eliminated and democracy will be restored to its original level in three to five years. Using another alternative measure of democracy we also find that for a shock in remittances, there is an observed small permanent positive effect on democracy after the fifth year that do not revert to zero after the ten year period horizon.

References

- Abdih Y. Chami, R. Dagher, J and Montiel, P. (2012). Remittances and institutions: Are remittances a curse? *World Development*, 40, 657–666.
- Acemoglu, D. Naidu, S. Restrepo, P. and Robinson, J. (2014) Democracy does cause growth, NBER Working Paper No. 20004, Cambridge, MA: National Bureau of Economic Research
- Acosta, P. Lartey, E. and Mandelman, F. (2007). Remittances and the Dutch disease, in *Federal Reserve Bank of Atlanta*, Atlanta.
- Ahmed, F. (2012). The Perils of Unearned Foreign Income: Aid, Remittances, and Government Survival. *American Political Science Review*, 106 (1): 146–165.
- Amuedo-Dorantes, C. and Pozo, S. (2004). Workers' remittances and the real exchange rate: A paradox of gifts. *World Development*, 32, 1407–1417.
- Adams, R. and Page, J. (2005). Do international migration and remittances reduce poverty in developing countries? *World Development*, 33, 1645–1669.
- Adams, R.J. (2005). *Remittances, household expenditure and investment in Guatemala*. Policy Research Working Paper Series 3532. Washington, DC: The World Bank.
- Arun, T. and Ulku, H. (2011). Determinants of remittances: The case of the South Asian community in Manchester. *Journal of Development Studies*, 47, 894–912.
- Aslanidi, O. (2007). The Optimal Monetary Policy and the Channels of Monetary Transmission Mechanism in CIS-7 Countries – The Case of Georgia, *CERGE-EI Discussion Paper No. 2 007-1 71*, January
- Barajas, A. Chami, R. Fullenkamp, C. Gapen, M. and Montiel, P. (2009). *Do workers' remittances promote economic growth?* IMF Working Paper WP/09/153. Washington, DC: International Monetary Fund.
- Barros, C. Araújo, A. and Faria, J. (2013b). Brazilian land tenure and conflicts: The landless peasants' movement. *Cato Journal* 33, 47–75.
- Barros, C. Faria, J. and Araújo, A. (2013a). Brazilian land tenure conflicts: A spatial analysis. *Journal of International Development*, 26, 409–421.
- Brandt, P. and Freeman, J. (2009) Modeling Macro-Political Dynamics, *Political Analysis* 17:113–142
- Chami, R. Hakura, D. and Montiel, P. (2009). Remittances: An Automatic Output Stabilizer? IMF Working Paper WP/09/91. Washington, DC: International Monetary Fund.
- Chami, R. Barajas, A. Cosimano, T. Fullenkamp, C. Gapen, M. and Montiel, P. (2008). *Macroeconomic Consequences of Remittances* Occasional Paper No. 259. Washington, DC: International Monetary Fund.
- Chami, R. Fullenkamp, C. and Jahjah, S. (2003). *Are immigrant remittance flows a source of capital for development?* IMF Working Paper WP/03/189. Washington, DC: International Monetary Fund.
- Chami, R., Fullenkamp, C., and Jahjah, S. (2005). Are immigrant remittance flows a source of capital for development. *IMF Staff Papers*, 52, 55–81.
- Chiodi, V. Jaimovich, E. and Montes-Rojas, G. (2012). Migration, remittances and capital accumulation: Evidence from rural Mexico. *Journal of Development Studies* 48, 1139–1155.
- Combes, J. and Ebeke, C. (2011). Remittances and household consumption instability in developing countries. *World Development*, 39, 1076–1089.
- Cox Edwards, A. and Ureta, M. (2003). International migration, remittances and schooling: Evidence from El Salvador. *Journal of Development Economics*, 72, 429–461.
- Escriba-Folch, A. and Meseguer, C. (2015) Remittances and Democratisation, *International Studies Quarterly*, online (doi: [10.1111/isqu.12180](https://doi.org/10.1111/isqu.12180))
- Frank, R. and Hummer, R. (2002). The other side of the paradox: The risk of low birth weight among infants of migrant and nonmigrant households within Mexico. *International Migration Review*, 36, 746–765.
- Gastil, R. (1982-1987) *Freedom in the World*. Westport, Conn.: Greenwood, various years.

- Gianni, A. and Giannini, C. (1997). *Topics in Structural VAR Econometrics*, 2nd Ed., Berlin: Springer-Verlag.
- Gupta, S. Pattillo, C. and Wagh, S. (2009). Effect of remittances on poverty and financial development in Sub-Saharan Africa. *World Development*, 37(1), 104–115.
- Hanson, G. and Woodruff, C. (2003). *Emigration and Education Attainment in Mexico*. mimeo. University of California, San Diego. Retrieved from: <http://irps.ucsd.edu/assets/022/8772.pdf>
- Hassan, G. and Holmes, M. (2013). Remittances and the real effective exchange rate. *Applied Economics*, 45, 4959–4970.
- Hildebrant, N. and McKenzie, D. (2005). *The effect of migration on child health in Mexico* World Bank Policy Research Working Paper 3573 and Department of Economics, Stanford University. Washington, DC: The World Bank.
- Kapur, D. (2010) *Diaspora, Development and Democracy. The Domestic Impact of International Migration From India*. Princeton, New Jersey: Princeton University Press.
- Kurosaki, T. (2006). Consumption vulnerability to risk in rural Pakistan. *Journal of Development Studies*, 42(1), 70–89.
- Lewis, D. (2011) *Bangladesh Politics, Economy and Civil Society*, Cambridge: Cambridge University Press.
- Mishra, P. (2005). Macroeconomic impact of remittances in the Caribbean. Unpublished paper. Washington, DC: International Monetary Fund.
- Montiel, P. (1999). Determinants of the long-run equilibrium exchange rate: An analytical model. In L. Hinkle and P. Montiel (Eds.), *Exchange Rate Misalignment: Concepts and Measurement for Developing Countries*. Oxford: Oxford University Press.
- Meseguer, C. and Burgess, K. (2014) International Migration and Home Country Politics. *Studies in Comparative International Development*, 49 (1): 1–12.
- Morrison, K. (2009) Oil, Non-Tax Revenue, and the Redistributive Foundations of Regime Stability. *International Organization*, 63 (1): 107–138.
- Moses, J. (2011) *Emigration and Political Development*. New York: Cambridge University Press.
- Page, J., and Plaza, S. (2006). Migration remittances and development: A review of global evidence. *Journal of African Economies*, 15, 245–336.
- Papaioannou, E. and Siourounis, G. (2008). Democratisation and Growth, *Economic Journal*, 118(532), 1520–1551.
- Pfütze, T. (2012). Does Migration Promote Democratization? Evidence from the Mexican Transition. *Journal of Comparative Economics* 40(2):159–175.
- Pfütze, T. (2014) Clientelism vs. Social Learning: The Electoral Effects of International Migration. *International Studies Quarterly*, 58(2): 295–307.
- Quartey, P. and Blankson, T. (2004). *Do migrant remittances minimize the impact of macro-volatility on the poor in Ghana?* Report prepared for the Global Development Network (GDN). Washington, DC: International Monetary Fund.
- Ratha, D. (2009). *Leveraging remittances for development*. Migration Policy Institute Policy Brief No. 3, June 2007. Washington DC: Migration Policy Institute.
- Regan, P. and Frank, R. (2014) Migrant Remittances and the Onset of Civil War. *Conflict Management and Peace Science*, 31 (5): 502–520.
- Sayan, S. (2006). *Business cycles and workers' remittances: How do migrant workers respond to cyclical movements of GDP at home?* IMF Working Paper WP/06/52. Washington, DC: International Monetary Fund.
- Weiss, A. (2014) *The Domestic Politics of South Asia*, Bowman and Littlefield
- World Bank. (2006). *The development impact of workers' remittances in Latin America. Vol. 2: Detailed Findings (Chapter 3, Section V)*. Report No. 37026. Washington, DC: World Bank.
- Yang, D. and Choi, H. (2007). Are remittances insurance? Evidence from rainfall shocks in the Philippines. *World Bank Economic Review* 21, 219–248.